

Planting Tips

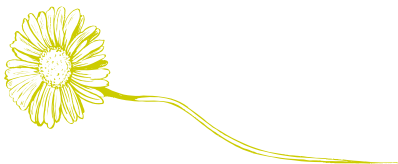
Native Wildflowers and Prairie Grasses

Iowa wildflowers invite bees, songbirds, butterflies, and other “critters” to our gardens. Prairie wildflowers and grasses make excellent garden and landscaping plants. By planting Iowa native plants, you can help preserve these unique species, create wildlife habitat, and enjoy a self-sufficient garden.

Native prairie plants are perfectly suited to grow in Iowa, because they are low maintenance, minimizing the need for pesticides, fertilizer and watering, thus benefiting the environment

Recent reports indicate the decline in the populations of songbirds, butterflies, and pollinators, and some game birds is due to habitat destruction. While it is important to provide winter feeders for these creatures, it is even more critical to create native habitat which will greatly impact these populations by providing self-perpetuating, undisturbed nesting areas, natural food sources, and winter shelters.

A habitat can be as small or as large as your area and imagination allows. Start by using native plants in your existing beds, borders, ditches or create a small “prairie plot” of Iowa wildflowers and grasses in your yard.



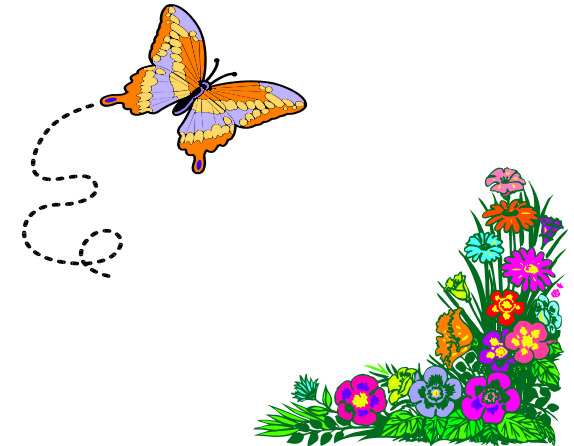
Prepare the planting bed as you would for any garden. You may want to include some grasses in your planting. Grasses add texture, fall color and structure (support) to the flowers. The flowers may need to be staked to encourage them to grow straight without the grasses to support them. Place plants approximately 12-18 inches apart, plant them just below the crown and water well. Mulching with 3-4 inches of straw or wood chips will decrease the need for weeding and watering. The first year your seedlings may need some watering if less than 1” of rain per week is received. All of the plants we sell are hearty, healthy and grown from seed collected in Iowa.



Linn Soil & Water Conservation District
3025 7th Avenue
Marion, IA 52302

Phone: 319-377-5960, Ext. 3
Email: kellie.arduser@ia.nacdnet.net

Linn Soil and Water
Conservation District



2006 Native Wildflower & Prairie Grasses Order Form

All SWCD programs and services are offered on a nondiscriminatory basis without regard to race, color, national origin, religion, sex, age, marital status, or



ORDERS MUST BE RECEIVED BY March 27, 2006

Return order to Linn SWCD
3025 7th Avenue, Marion, IA 52302

Questions? Please contact Kellie @
Phone: 319-377-5960, Ext. 3
Email: kellie.arduser@ia.nacdn.net

All plants will be strictly top quality. Notify us as soon as possible of any shortage or if any stock is in poor condition. There is no survival guarantee on plants sold at these prices. Due to limited availability of some varieties, PLEASE PLACE YOUR ORDERS AS SOON AS POSSIBLE!!!!

Name _____
Address _____
City _____, IA, Zip _____
Phone _____
E-Mail _____

For office use only

ORDER NO: _____

Date Paid: _____ Amount: _____

Check #: _____ Cash: _____

Received By: _____

Order Form

** All plants are sold in 6-packs, \$10.00 each.

** Each 6-pack consists of 6 — 2 " X 3" pots.

Forbes (Wildflowers)	Quantity
Butterfly Milkweed* <i>Soil Type: med.-dry Height: 2-3' Color: Orange Bloom: June-July</i>	
Black-eyed Susan <i>Soil Type: med.-dry Height: 1-3' Color: Yellow Bloom: July-August</i>	
Columbine* <i>Soil Type: wet-med. Height: 1-2' Color: Red/yellow Bloom: May-June</i>	
Compass Plant* <i>Soil Type: wet-dry Height: 3-8' Color: Yellow Bloom: July-Aug.</i>	
Culver's Root* **NEW** <i>Soil Type: wet-dry Height: 3-5' Color: White Bloom: July-Aug.</i>	
False Indigo **NEW** <i>Soil Type: wet-dry Height: 6-18' Color: Purple Bloom: July-Aug.</i>	
Golden Alexanders* **NEW** <i>Soil Type: wet-dry Height: 1-3' Color: Yellow Bloom: April-June</i>	
Grey-Headed Coneflower **NEW** <i>Soil Type: wet-dry Height: 3-5' Color: Yellow Bloom: July-Aug.</i>	
Heath Aster* **NEW** <i>Soil Type: med.-dry Height: 1-3' Color: White Bloom: Aug.-Oct.</i>	
Hoary Vervain* <i>Soil Type: dry-med. Height: 2-3' Color: Blue Bloom: June-July</i>	
Jacob's Ladder* **NEW** <i>Soil Type: wet-dry Height: 8" Color: Blue Bloom: April-May</i>	
New England Aster <i>Soil Type: med. - wet Height: 2-5' Color: Violet Bloom: Sept.-Oct.</i>	
Pale Purple Coneflower* <i>Soil Type: med.-dry Height: 2-3' Color: Lavendar Bloom: June-July</i>	
Prairie Blazingstar* **NEW** <i>Soil Type: wet-med. Height: 2-5' Color: Purple Bloom: August</i>	
Prairie Coreopsis <i>Soil Type: med. - dry Height: 1 - 3' Color: Yellow Bloom: June-July</i>	
Prairie Smoke* **NEW** <i>Soil Type: wet-dry Height: 6-12" Color: Red Bloom: May-June</i>	
Prairie Violet* **NEW** <i>Soil Type: med.-dry Height: 4-8" Color: Violet Bloom: April-June</i>	
Purple Prairie Clover* <i>Soil Type: med. - dry Height: 1-3' Color: Purple Bloom: July-Aug</i>	

* After the species represent those items that are ideal for garden situations, others are better for naturalizing areas.

Ohio Spiderwort <i>Soil Type: dry-medium Height: 2-4' Color: Blue Bloom: May-June</i>	
Rattlesnake Master* <i>Soil Type: wet-dry Height: 3-5' Color: Grey-Green / White Bloom: July - Aug</i>	
Showy Goldenrod* **NEW** <i>Soil Type: medium -dry Height: 2-4' Color: Yellow Bloom: Aug - Sept</i>	
Smooth Aster <i>Soil Type: wet-dry Height: 3-5' Color: Blue Bloom: Aug.-Sept.</i>	
Smooth Beardtongue* **NEW** <i>Soil Type: medium -dry Height: 2-4' Color: White Bloom: May-June</i>	
Wild Bergamot <i>Soil Type: medium-dry Height: 3-4' Color: Lavender Bloom: July-August</i>	
Grasses	Quantity
Big Bluestem <i>Soil Type: wet-dry Height: 3-8' Color: Green/purple Bloom: Sept.-Oct.</i>	
Cord Grass <i>Soil Type: wet - medium Height: 4-8' Color: green/tan Bloom: Aug. - Sept.</i>	
Canada Wild Rye <i>Soil Type: wet - dry Height: 3-5' Color: green/tan Bloom: July - Aug.</i>	
Indian Grass <i>Soil Type: medium-dry Height: 3-6' Color: green/golden Bloom: Sept.-Oct.</i>	
Little Blue Stem* <i>Soil Type: dry-medium Height: 2-3' Color: green/red Bloom: Sept.-Oct.</i>	
Prairie Dropseed* <i>Soil Type: wet-dry Height: 2-3' Color: Green/brown Bloom: July-Sept.</i>	
Side-Oats Grama* <i>Soil Type: medium-dry Height: 1-3' Color: green/red/orange Bloom: July-Sept.</i>	
Quantity _____ X \$10.00 =	
	5% Sales Tax
	TOTAL



TERMS: Full payment is required at the time the order is placed. Plants will arrive in May and you will be contacted on the pickup time and location. Checks are payable to Linn SWCD.